

Public Art Commission Request for Qualifications + Proposal (RFQ/RFP)

Homer Tennis Center Entry + Basketball Pavillon Wall

MacGregor Park | Houston, Texas



OPPORTUNITY

Houston Parks Board (HPB) seeks qualifications and concepts from experienced artist teams for a two-site public art intervention in MacGregor Park, a 100-year-old regional park located in a historic African American neighborhood that connects to the Bayou Greenways system on Brays Bayou. This is a narrative infrastructure opportunity to elevate the park's next

century of placemaking. This opportunity calls for a conceptually rigorous and community-responsive artistic intervention. An opportunity to bring nature into the recreational spaces as well as honoring the individual histories at the below. There is a possibility that this opportunity could result in an additional site (separate budget) within the park.

- Interior wall (321SF) within the entry of the Homer Tennis Center
- Exterior community center wall (1307 SF) shared with the Basketball Pavillon

Budget for both sites is up to \$230,000.

The deadline for submission of qualifications is July 28, 2026, at 7:00 pm CST. No late submissions will be accepted. Application link: <https://form.jotform.com/260745751982063>

THEMATIC DIRECTION + MATERIALS

The goals for the project include world class art by Houston-based artists, artwork that is reflective of community history and works that are regarded as excellent additions to the City of Houston's Parks system.

Submissions should consider:

- Nurture narrative (included)

- 100 years of individual and collective stories
- Community engagement video (also found on the Houston Parks Board website)
- Future generations of families and dreamers that will gather in these recreational spaces
- Visual continuity between the two locations while responding to each site's distinct spatial energy

The material approaches may include, but are not limited to painted mural, mosaic, metal relief, mixed media, integrated sculptural or dimensional elements. All materials must be suitable for heavy public use and Houston's climate conditions.

Works must be family friendly, suitable for public display, free of safety hazards, resistant to graffiti and vandalism, meet or exceed City of Houston ADA requirements, require minimal maintenance and durability for a minimum 20-year lifespan.

SCOPE OF WORK

The selected artist or team will:

- Develop final designs with approval by HPB and Houston Parks and Recreation Department
- Fabricate, site prep and install artwork (lighting included) for both sites on schedule
- Acquire any required permits and maintain insurance
- Provide maintenance details upon completion of project
- Coordinate with HPB and lead architectural firm (as applicable)

ELIGIBILITY

Open to experienced Houston-based professional artists, artist teams, and creative entities. Teams may include, but not limited to, artists, fabricators, historians, engineers, or architects as needed. Single or multiple artists are allowed to apply in teams. Applicants must be 18 years or older, able to work at the required scale and be available to complete the project by deadlines. Artist applying in teams must split the allotted number of work samples between themselves. Preference given to hyperlocal artists with lived or demonstrated connection to the park and immediate neighborhood.

Submissions not meeting the eligibility criteria or application requirements will not be considered.

PROJECT TIMELINE

Park renovation is scheduled to begin in the Summer of 2026. The selected artist(s) or team will complete the final design proposal, following a community engagement opportunity and any

necessary permitting in late 2026 with fabrication and installation (aligned with construction schedule) completed by Spring 2027/28.

SELECTION PROCESS

Submission includes:

- statement of interest specific to location and project
- artist(s) statement
- CV/resume (max 2 pages per team member)
- Proposal narrative (max 3 pages) with material specifications and optional preliminary visual renderings
- portfolio of relevant past work (10 max)
- description of experience (maximum 1 page)
- statement of local and/or hyperlocal connection (less than 50 words)
- budget estimate and project timeline
- References (up to 3)

Qualified submissions will be reviewed by a stakeholder panel that includes community representation with possible presentations by finalists on September 18, 2026. Selected artist or artist team will be contracted for a community engagement event, final proposal, fabrication and installation of artwork aligned with the construction schedule.

SELECTION CRITERIA

- Strength of proposal and artistic vision across dual sites
- Relevance to nurture theme, neighborhood, and park
- Experience with public art projects
- Capacity to deliver within timeline and budget

VIRTUAL INFORMATION SESSION (optional)

The session will provide background information, site imagery, and an opportunity for questions.

June 23, 2026 at 2:00 pm (CST) LINK: <https://meet.google.com/ipz-xtfc-eoj>

The deadline for submission is July 28, 2026. The Houston Parks Board is contracting with Blackwood Advisors to administer the artist selection and serve as project liaison. Direct all questions to macgregorparkpublicart@gmail.com by July 9, 2026.

TIMELINE*

June 2, 2026	RFQ/P released
June 23, 2026	Info session via GoogleMeets (2:00 - 3:00 pm)
July 9, 2026	Deadline to submit questions
July 28, 2026	RFQ/P submission deadline
September 18, 2026	Finalist presentations to panelist (<i>if needed</i>)
September 29, 2026	Notification of selected artist(s), artist team or creative entity
October 15, 2026	Contract completed with HPB
Oct-Nov 2026	Design development phase and optional community engagement
December 8, 2026	Final design submitted for approval by HPB and Houston Parks and Recreation Department
December 2026	Fabrication phase begins
August 2027	HFTC Installation phase
August 2028	Basketball Pavillion Installation phase

*All dates are subject to change.

BACKGROUND INFORMATION

MacGregor Park Nurtures

MacGregor Park began as an intentional gift to nurture growth, health, and belonging across generations. Nurture is the intentional cultivation of growth, health, and well-being across ecological, social, cultural, and personal realms. It is relational, patient, and sustaining—embodied in care for land and people, collaborative action, and a shared commitment to flourishing across generations. The guiding theme—nurture as a relational practice—permeates every path, gathering, and act of stewardship. Over a century, it has become a living shared space where neighbors, ecology, creativity, active recreation, and civic life are nurtured.

At MacGregor Park nurture is more than a sentiment—it is a practice rooted in community, recreation, and the rhythms of the natural world. The act of gathering for play, rest, and storytelling forms an inheritance of care that stretches back generations. From Sunday picnics beneath the pines to youth tennis, recreation becomes a form of social glue—a gentle choreography through which people learn to belong, to share space, and to honor one another’s presence. These shared moments offer more than leisure; they cultivate trust, community, and the quiet confidence that comes from knowing you are part of something living and local.

Civic engagement carries the same spirit of nurture, often emerging through generous acts and volunteer commitments. Neighborhood associations, faith-based initiatives, and friends of the park sustain the public realm not merely by advocacy but through relationship. In this context, to engage civically is to tend the communal space—to listen, to mend, to co-create. It is the elder organizing a clean-up, the instructor teaching water safety, or the creative seeking peace and inspiration in the green space. Each is a form of caretaking, weaving together histories of stewardship that affirm the neighborhood’s evolving identity as both rooted and responsive.

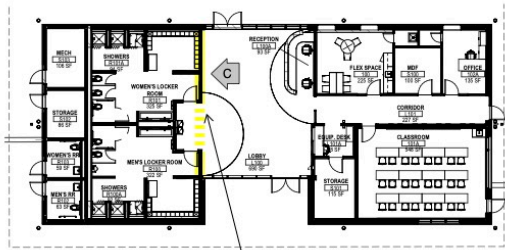
Ecology at MacGregor is likewise intertwined with nurture, for the park’s landscapes are both generous and fragile. From bayous to pine, the ecosystems that shape the space demand reverence and reciprocity. Here, nurture continues to require ecological literacy—the understanding that human flourishing depends on the health of soil, water, and species. Restoration projects and conservation efforts reflect an ethic that recognizes nature not as backdrop but as integral. Acts of ecological care sustain both biodiversity and belonging, affirming that the health of place mirrors the health of people.

Together, recreation, civic engagement, and ecology form a MacGregor triad of nurture—an interwoven practice of care that transcends boundaries between the social and the natural. In this framework, to nurture is to play and participate, to protect and renew, to make space for joy while honoring dedication. It is a Houston story written in trails and tree lines, community meetings and gatherings, tournaments and bayou renewals—a reminder that in Houston, care is not an abstraction but a living, shared practice that binds people to one another and to the land that sustains them. This gathering space will be more of what it has been for its neighbors. The upcoming design honors the memory in the landscape and the voices of community while deepening connections to nature, expanding active recreation and opportunities to gather. MacGregor has nurtured generations and will continue to nurture into the next century.

Building Parameters

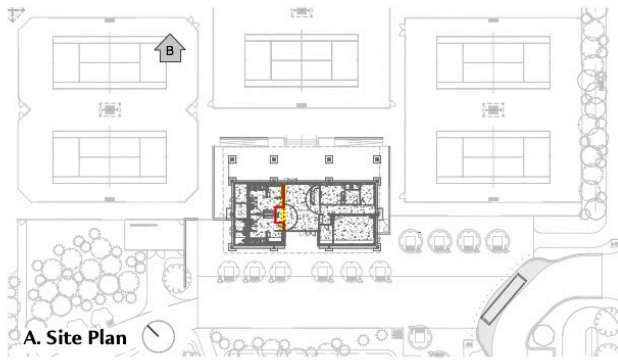
MacGregor Park Tennis Center

Date: 2026-0312



B. Floor Plan

INTERIOR DRYWALL PARTITION

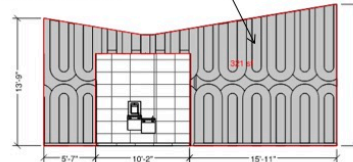


A. Site Plan

General Notes

1. AVOID DAMAGING THE DRYWALL SURFACE. DRYWALL PARTITIONS ARE NOT STRUCTURAL AND CAN CRACK OR WEAKEN IF OVERLOADED OR IMPROPERLY FASTENED.
2. ANCHOR ARTWORK TO WALL STUDS WHEN POSSIBLE. HEAVIER PIECES SHOULD BE SECURED TO THE WALL'S STRUCTURAL FRAMING RATHER THAN RELYING ONLY ON THE DRYWALL BOARD.
3. USE APPROPRIATE WALL ANCHORS FOR LIGHTER ARTWORK. APPROVED DRYWALL ANCHORS OR MOUNTING HARDWARE SHOULD BE USED WHEN STUDS ARE NOT AVAILABLE.
4. PREPARE THE SURFACE PROPERLY IF PAINTING. CLEAN THE WALL, REPAIR DENTS OR HOLES, SAND THE SURFACE IF NEEDED, AND APPLY A SUITABLE PRIMER BEFORE PAINTING.
5. USE INTERIOR-GRADE MATERIALS. SELECT PAINTS, COATINGS, AND MATERIALS DESIGNED FOR INTERIOR DRYWALL SURFACES TO ENSURE PROPER ADHESION AND DURABILITY.
6. APPLY PROTECTIVE FINISHES WHERE APPROPRIATE. IN HIGH-TRAFFIC AREAS, CONSIDER PROTECTIVE COATINGS OR CLEAR FINISHES TO HELP PREVENT SCUFFING OR DAMAGE.
7. PLAN FOR SAFE AND CODE-COMPLIANT POWER AND LIGHTING IF REQUIRED. ELECTRICAL OUTLETS, WIRING, AND LIGHTING FIXTURES SHOULD BE INSTALLED BY A LICENSED ELECTRICIAN, COORDINATED WITH THE WALL FRAMING, AND COMPLY WITH APPLICABLE BUILDING AND ELECTRICAL CODES.

321 SF - SURFACE DIMENSIONS OF THE FEATURE SURFACE IS ON THE WALL OPPOSITE THE RECEPTION DESK IN THE LOBBY AREA

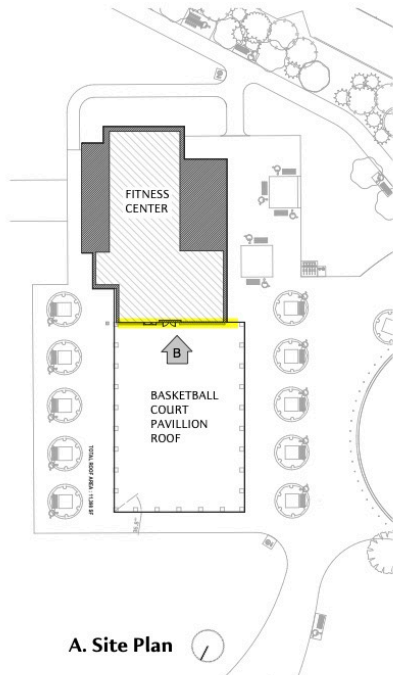


C. Elevation (Outside the Locker rooms)

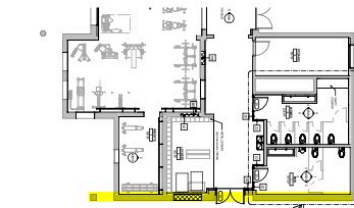
Moody Nolan

MacGregor Park Fitness Center

Date: 2026-0312



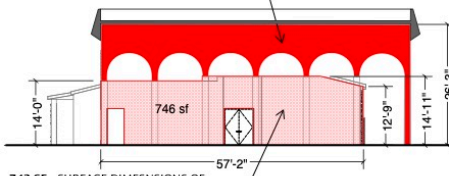
A. Site Plan



B. Floor Plan

EXTERIOR PLASTER WALL SYSTEM

564 SF - SURFACE DIMENSIONS UNDER BASKETBALL COURT PAVILLION ROOF & ABOVE FITNESS CENTER EXTERIOR WALL



743 SF - SURFACE DIMENSIONS OF FITNESS CENTER EXTERIOR WALL

C. East Elevation (Facing towards Basketball Court)

General Notes

1. DO NOT PENETRATE THE PLASTER SYSTEM. THE PLASTER, INSULATION, AND WEATHER BARRIER MUST REMAIN INTACT TO PREVENT CRACKING, WATER INTRUSION, AND LONG-TERM BUILDING DAMAGE.
2. USE FRAMED OR STAND-OFF MOUNTING SYSTEMS. ARTWORK SHOULD BE SUPPORTED BY AN INDEPENDENT FRAME OR ADJACENT STRUCTURE RATHER THAN FASTENED DIRECTLY THROUGH THE PLASTER SURFACE.
3. PREPARE THE SURFACE PROPERLY IF PAINTING. CLEAN THE WALL, REPAIR CRACKS, APPLY AN APPROPRIATE PRIMER OR SEALANT, AND USE EXTERIOR-GRADE PAINTS DESIGNED TO BOND WITH PLASTER OR STUCCO.
4. SELECT DURABLE EXTERIOR MATERIALS. USE PAINTS, COATINGS, AND MATERIALS THAT CAN WITHSTAND SUNLIGHT, TEMPERATURE CHANGES, RAIN, AND HUMIDITY.
5. APPLY A PROTECTIVE FINISH. USE UV-RESISTANT AND WEATHER-RESISTANT COATINGS TO REDUCE FADING, PEELING, AND ENVIRONMENTAL WEAR.
6. PLAN FOR REGULAR MAINTENANCE. EXTERIOR ART SHOULD BE INSPECTED PERIODICALLY FOR FADING, PEELING PAINT, OR VANDALISM AND REPAIRED AS NEEDED.
7. PLAN FOR SAFE AND CODE-COMPLIANT POWER AND LIGHTING IF REQUIRED. ELECTRICAL SERVICE, CONDUIT, AND FIXTURES SHOULD BE INSTALLED BY A LICENSED ELECTRICIAN, MOUNTED ON NEARBY STRUCTURES OR FRAMES (NOT THROUGH THE PLASTER WALL), AND DESIGNED FOR EXTERIOR WEATHER-RESISTANT USE.

Moody Nolan